



L&amp;C

 LABELING  
& CODING

## STYROTECH ST-1550 STRETCH SLEEVE APPLICATOR



### STRETCH APPLICATIONS



### Dependable, value priced stretch sleeve applicator for speeds up to 30 cpm

Styrotech ST-1550 stretch sleeve systems represent the next generation of the popular ST-1500. Like the ST-1500, ST-1550 stretch sleeve applicators are designed to accommodate a wide range of container types and sizes including large jugs and bottles. They deliver dependable performance at steady-state speeds up to 30 cpm.

The ST-1550 features numerous component and design updates including a new frame that provides easier access from the side of the applicator, a more powerful Allen-Bradley PLC, a new 7" HMI, and common sensors and air cylinders.

Styrotech ST-1550 stretch sleeve applicators are a dependable, value priced option for low to mid-speed production requirements. Styrotech stretch sleeve systems are known around the world for their performance and the new and improved ST-1550 ensures that this legacy will continue.

Axon Styrotech stretch sleeve applicators are designed and manufactured in Raleigh, NC by P.E. North America. Parts and service support are also provided from the Raleigh, NC facility.

### FEATURES AND BENEFITS

- **Small, space efficient footprint** - Small footprint saves valuable floor space
- **Easy installation** - Installs over existing conveyor; no expensive conveyor modifications required
- **New frame design with rear access electrical enclosure** - Enables easier operator and maintenance access from side of the machine
- **Upgraded loader assembly** - Linear rail and lightweight arms increased rigidity, decreased maintenance
- **Allen-Bradley PLC** - Industry standard machine controls
- **New 7" color touchscreen HMI** - Ease of operation, enhanced messaging
- **Upgraded print registration sensor** - More accurate film positioning

# **STYROTECH ST-1550 STRETCH SLEEVE APPLICATOR**

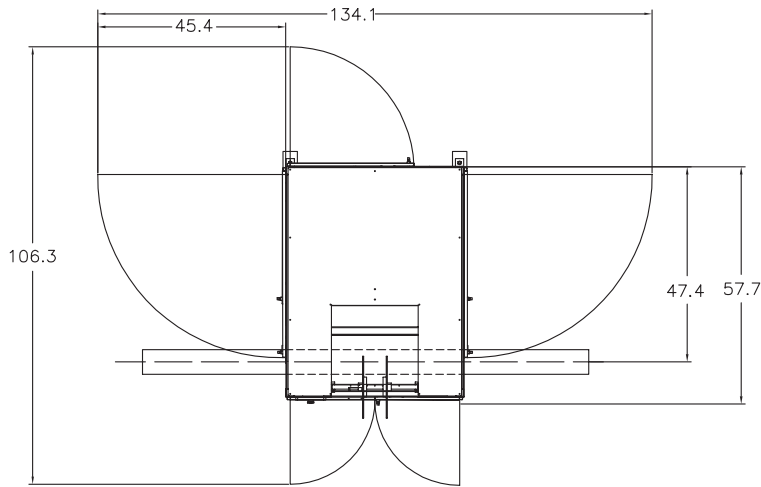
## TYPICAL PRODUCT SPECIFICATIONS

<b>Speed</b>	Up to 30 cpm
<b>Film Layflat Range</b>	3.0" - 15.0"
<b>Container Sizes</b>	Minimum Diameter = 2.25" Maximum = 9.5" L x 6.5" W x 13.5" H
<b>Applied Film Materials</b>	Polyethylene
<b>Film Specifications</b>	2.0 - 3.0 mils with 10 % stretch
<b>Sleeving Requirement</b>	Containers must be empty
<b>PLC</b>	Allen-Bradley

<b>HMI</b>	7" Beijer
<b>Air Cylinders</b>	SMC
<b>Air</b>	8 cfm at 80 PSIG
<b>Electrical Enclosure</b>	NEMA 4X
<b>Machine Frame</b>	Stainless steel
<b>Power</b>	120 VAC, 1-Phase standard 220 VAC, 1-Phase optional

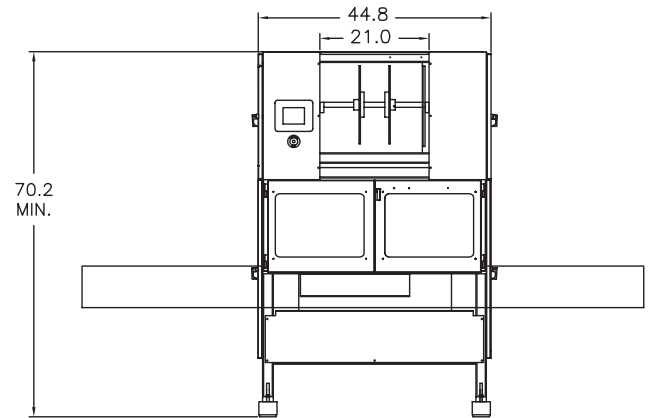
## CONFIGURATION

Top view



Dimensions are in inches

Front view



## OPTIONS

- **Machine Conveyor** - Through conveyor supplied with sleeve applicators
- **Container Orientation** - Positions containers in required alignment prior to sleeve application
- **Light Stack** - Indicates machine status
- **Lift Assist** - Push button pneumatic system raises elevator to improve ease of changeovers and clearing container jams
- **Spare Parts Kit** - Recommended start-up parts inventory

## STRETCH APPLICATIONS



©2019 ProMach Inc. ProMach reserves the right to change or discontinue specifications and designs shown in this brochure without notice or recourse  
PM-AX-SP112\_Axon\_ST-1550\_0719v5

PHONE  
**919-772-8383**

EMAIL  
**Axon@ProMachBuilt.com**

WEB  
**AxonCorp.com**

P.E. North America  
3080 Business Park Dr, Suite 103  
Raleigh, NC 27610