



L&amp;C

 LABELING  
& CODING

## AURORA® MID-SPEED SHRINK SLEEVE APPLICATOR



### Dependable, steady-state operation at speeds up to 400 cpm

Aurora® shrink sleeve applicators are the mid-speed models in Axon's complete line of shrink sleeve systems. Aurora applicators provide dependable, steady-state production speeds up to 400 containers or multi-packs per minute.

Aurora sleeve applicators are mandrel style machines that use servo motion control to deliver consistent, repeatable performance. Container changeovers are tool-less and require less than ten minutes depending on product sizes and shapes.

Like virtually every Axon shrink sleeve applicator, Aurora offers the flexibility to perform five important shrink applications:

- Tamper evident bands
- Full body over the cap sleeves
- Partial body sleeves
- Multi-packs
- Full body sleeves

This flexibility makes Axon shrink sleeve applicators one of the best values in the industry.

#### FEATURES AND BENEFITS

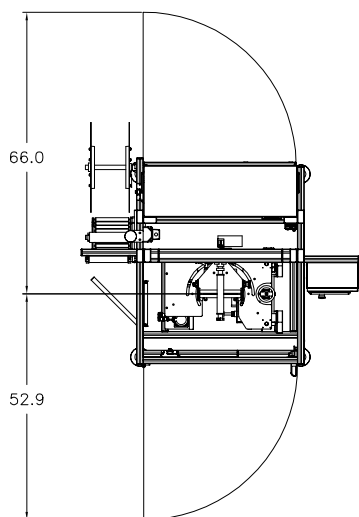
- **Size range flexibility** - Container or multi-pack diameters range from 1.2" (30 mm) to 4.9" (125 mm). Larger sizes are compatible with Aurora Wide applicators
- **Fast, tool-less size changeovers** - Size changeovers can be completed in less than ten minutes depending on container sizes and shapes
- **Servo motion control** - Dedicated servo drives for the feedscrew, film feed system, and cutting assembly deliver fast, accurate film feeding, registration and cutting
- **Intuitive, industry standard PackML programming & HMI user interfaces** - Consistent terminology, consistent screen displays and standardized program structures enhance ease of operation and maintenance
- **Auto-reversing cutter assembly & dual edge blades** - Dual edge cutting blades with a programmed auto-reversing cutting system extends blade life and reduces frequency of blade replacement
- **Electronic height adjustment** - Push-button system eliminates manual hand-crank height adjustments
- **Pivoting head assembly** - Film orientation is easily adjusted for non-round containers by rotating the sleeving head assembly up to 90°
- **Sealed-for-life bearings** - Lubrication free bearings and servo motion control make the Aurora a lubrication free machine

## TYPICAL PRODUCT SPECIFICATIONS

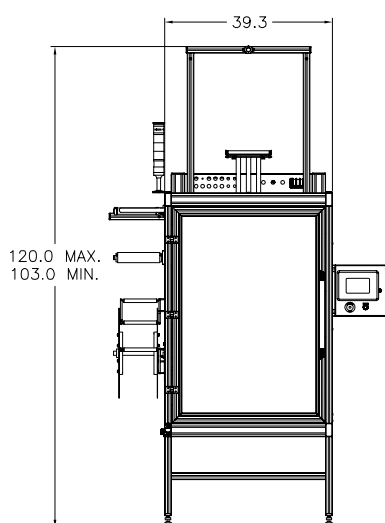
<b>Speed</b>	Up to 400 cpm	<b>Controls</b>	Allen-Bradley standard	Schneider Electric available option
<b>Film Layflat Range</b>	50 mm – 200 mm (2.0" – 7.8")	<b>HMI</b>	10" Allen-Bradley PanelView standard	10" Schneider Electric available option
<b>Container Diameter or Multi-Pack Cross Section</b>	30 mm – 125 mm (1.2" – 4.9")	<b>Servos</b>	Allen-Bradley standard	Schneider Elau available option
<b>Applied Film Materials</b>	PVC, PETG, OPS, PLA	<b>Electrical Enclosure</b>	NEMA 4 standard	NEMA 4X available option
<b>Film Thickness</b>	40-70 microns (1.5 - 3.0 mil)	<b>Machine Frame</b>	Extruded aluminum standard	304 Stainless steel available option
<b>Language Support</b>	English and Spanish Standard Other languages optional	<b>Power</b>	230 VAC, 3-phase standard	480 VAC, 3-Phase available option

## CONFIGURATION

Top view



Front view



\*Dimensions are in inches

## OPTIONS

- **Automatic Speed Control** - Enables machine to automatically increase or decrease speeds based on line conditions
- **Print Registration** - Fiber optic sensor reads film registration marks so the PLC can calculate cut lengths to assure sleeve length accuracy
- **Vertical, Horizontal & T Perforators** - Add perforations to enhance ease of opening
- **Infeed Timing Screws** - Required for multi-packs, certain container geometries
- **Product Spacers** - Precisely separate containers at the infeed to assure smooth production
- **Swing Arm HMI** - Provides flexible access to machine controls
- **Spare Parts Kit** - Recommended start-up parts inventory



TAMPER EVIDENT



PARTIAL



FULL BODY



FULL BODY OVER THE CAP



MULTIPACK

©2018 ProMach Inc. ProMach reserves the right to change or discontinue specifications and designs shown in this brochure without notice or recourse  
PM-AX-SP101\_Axon\_Aurora