



L&C

LABELING
& CODING

STYROTECH ST-2650 STRETCH SLEEVE APPLICATOR

Dependable, steady-state stretch sleeve application at speeds up to 60 cpm



STRETCH APPLICATIONS



Styrotech ST-2650 stretch sleeve systems are designed to accommodate a wide range of container types, shapes and sizes including large jugs and bottles. They deliver dependable performance at steady-state speeds up to 60 cpm.

ST-2650 stretch sleeve applicators incorporate a three-axis servo motion control system that provides accurate, consistent label placement, on-the-fly speed changes and label height adjustments, and reduced maintenance.

The three-axis servo motion control system and updated machine program enables the ST-2650 to deliver steady-state production speeds two times faster than traditional pneumatic stretch sleeve applicators.

A cantilevered frame design enables the ST-2650 to be installed using existing conveyor. The flexible design also makes it possible to add optional casters and levelers that allow the system to be moved into and out of a production line as needed.

The ease of operation and high speed capabilities of the ST-2650 make it one of the best values in the stretch sleeving industry.

FEATURES AND BENEFITS

- **Size range flexibility** - Container sizes from 8 oz. to 2 ½ gallons
- **Precise, intuitive label height adjustments** - Label height adjustments are in true millimeter increments
- **Fast size changeovers** - Size changeovers can be easily completed in 10 to 15 minutes depending on container sizes
- **Servo motion control** - Dedicated servo drives for the loader, elevator and film feed make the machine easy to operate and maintain
- **Recipe driven repeatability** - Pre-programmed settings assure that the correct parameters are used for each container after a size changeover
- **On the fly speed and label height adjustments** - Label position and speed adjustments can be completed on the fly which increases uptime and improves productivity
- **Automatic service notifications** - Alerts on HMI prompt operators and maintenance personnel when proactive maintenance routines are required
- **Sealed-for-life bearings** - Lubrication free bearings and servo motion control eliminate routine, manual lubrication

AXON **STYROTECH ST-2650** STRETCH SLEEVE APPLICATOR

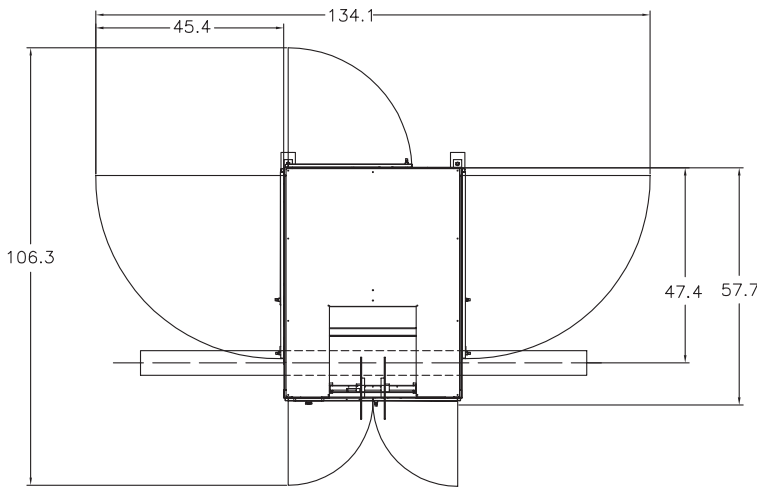
TYPICAL PRODUCT SPECIFICATIONS

Speed	Up to 60 cpm
Film Layflat Range	3.0" - 15.0"
Container Sizes	Minimum Diameter = 2.25" Maximum = 9.5" L x 6.5" W x 13.5" H
Applied Film Materials	Polyethylene
Film Specifications	2.0 - 3.0 mils with 10 % stretch
Language Support	English & Spanish

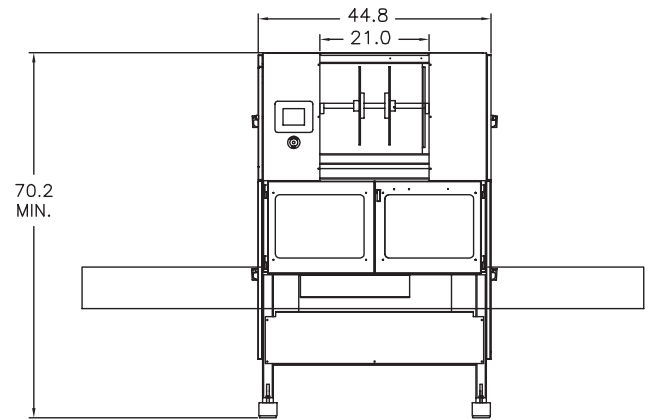
Controls	Allen-Bradley
HMI	Allen-Bradley
Servos	Allen-Bradley
Electrical Enclosure	NEMA 4X
Machine Frame	Stainless steel
Power	480 volts, 3-Phase - Standard 230 volts, 3-Phase - Optional

CONFIGURATION

Top view



Front view



Dimensions are in inches

OPTIONS

- **Machine Conveyor** - Through conveyor supplied with sleeve applicator
- **Container Orientation** - Positions containers in required alignment prior to sleeve application
- **Light Stack** - Indicates machine status
- **Casters** - Optional casters and levelers allow the system to be moved into and out of a production line as needed
- **Spare Parts Kit** - Recommended start-up parts inventory

STRETCH APPLICATIONS



©2019 ProMach Inc. ProMach reserves the right to change or discontinue specifications and designs shown in this brochure without notice or recourse
PM-AX-SP113_Axon_ST-2650_0719v4

PHONE
919-772-8383

EMAIL
Axon@ProMachBuilt.com

WEB
AxonCorp.com

P.E. North America
3080 Business Park Dr, Suite 103
Raleigh, NC 27610